



Dioxide Pacific Pty Ltd

ABN 37 079 902 846

PO Box 791, Narrabeen NSW 2101 Australia

Ph: (02) 9913 2444

Fax: (02) 9913 2591

Email: paulg@dioxide.com

Website: www.dioxide.com

Case Study – Ryde Aquatic Leisure Centre

CircleClear® Pool Water Management System Backwash & Bleed Water Recovery

- Pool specifications: 5 x pools: Comp 1980 m³, leisure 895 m³, Program 100 m³, Spa 7m³ and spa Toddlers Pool 12.6m³
- Location: Ryde NSW
- Swimmers: General public, leisure and lap swimmers, school carnivals.
- Existing make-up water is from mains supply at around 30ppm TDS.
- Date of commissioning: 03/04/07
- Why the CircleClear® system was installed: To enable recovery of backwash water and to control TDS in all pools.
- Model installed: CircleClear® 2-4 which is able to recover 2 m³/hr of purified water back to the pool. The purified water returns to the pool at 60-80 uS/cm conductivity.
- Overall water recovery: 65-70%.
- Number of operating hours as at 30/07/07: 2,336
- Water recovered back into the pool as at 30/07/07: 3,800,000 L
- TDS control: Pool water is controlled at 2,500 uS/cm (around 1,200 mg/L TDS). Water is bled from pools using a diaphragm bleed valve. The bleed water is de-salinated and returned to pool.
- Waste water from the CircleClear® plant is pumped directly to sewer.
- Operator: Sarjit Singh ph: (02) 8878 5100 or (0419) 474 943
- Chemical cleaning: The semi-automatic cleaning regime uses a three step process which takes around 1 day every month.
- Preventative maintenance: The system is maintained under a preventative maintenance contract which requires mandatory monthly visits.
- Documentation: The CircleClear® plant underwent a risk assessment according to NSW Health guidelines.



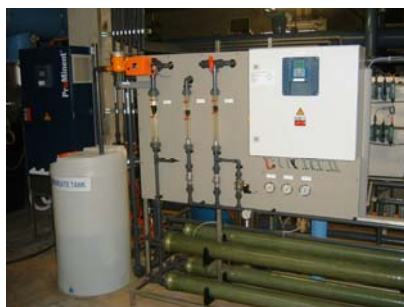
Control Panel Elevation



Multimedia filter



Control panel touchscreen



RO Unit front elevation



TDS Bleed control board



TDS control display