



2014 Price List

ProMinent Fluid Controls Pty Ltd

Gas Chlorination

Head Office:

Unit 4, 4 Narabang Way
BELROSE NSW 2085
AUSTRALIA
(PO Box 85, BELROSE WEST NSW 2085)
Phone: (02) 9450 0995 Fax: (02) 9450 0996
Email: sales@prominentfluid.com.au
Web: www.prominentfluid.com.au

Brisbane Office:

Unit 1, 68 Murdoch Circuit
ACACIA RIDGE QLD 4110
Ph: (07) 3213 1900 Fx: (07) 3272 0445
Email: pfcqld@prominentfluid.com.au

Melbourne Office:

1/21-22 National Drive
HALLAM VIC 3803
Ph: (03) 8795 7430 Fx: (03) 8795 7431
Email: pfcvic@prominentfluid.com.au

We reserve the right to make pricing and technical changes.
This PriceList supersedes all previous price lists.

E. & O. E.

All prices subject to the addition of GST.

Sydney, 1st January 2014

ProMinent Chlorination Systems

ProMinent offer Hydro Vacuum operated gas chlorinators with capacities available from a maximum of 75 gm/h through to a maximum 40 kg/h.

Chlorinators are suitable for direct bottle or drum mounting or alternatively for header mounting. With header mounting systems, we offer our horizontal and vertical headers complete with heating, flexible connections and auxiliary cylinder or drum valves.

Wherever possible, we recommend direct cylinder mounting to eliminate pressure lines and the costly replacement of flexibles and cylinder valves.

Hydro body parts are machined from a solid block of PVC and are not injection moulded. Machining is more expensive, but eliminates the residual stresses from the moulding process that lead to cracking and warping. Hydro chlorinators therefore have thicker and more rigid walls and the bodies will not warp.

The main diaphragm is double O-ring sealed. The rate valve is solid silver an alternative is PVDF.

The Hydro inlet valve assembly is easy to dismantle and clean without special tools.

Hydro use a yoke assembly for mounting the chlorinator which provides positive sealing.

The ejector check valve has a self-centring seal and provides positive shut-off.

Hydro's simple construction permits an operator to repair or replace parts, in most cases with only the need for a screwdriver.

Spare parts are readily available and are not overpriced. In many cases it may be cheaper to buy a new Hydro chlorinator than to repair another brand.

Systems available with Hydro chlorinators include remote ejectors, remote rate control valves, automatic changeover units and 4 - 20 mA servo control systems.

Other accessories such as chlorine gas leak detectors and complete installation of systems are available.

Please do not hesitate to contact one of our offices, should you require pricing or further details on this range of equipment.

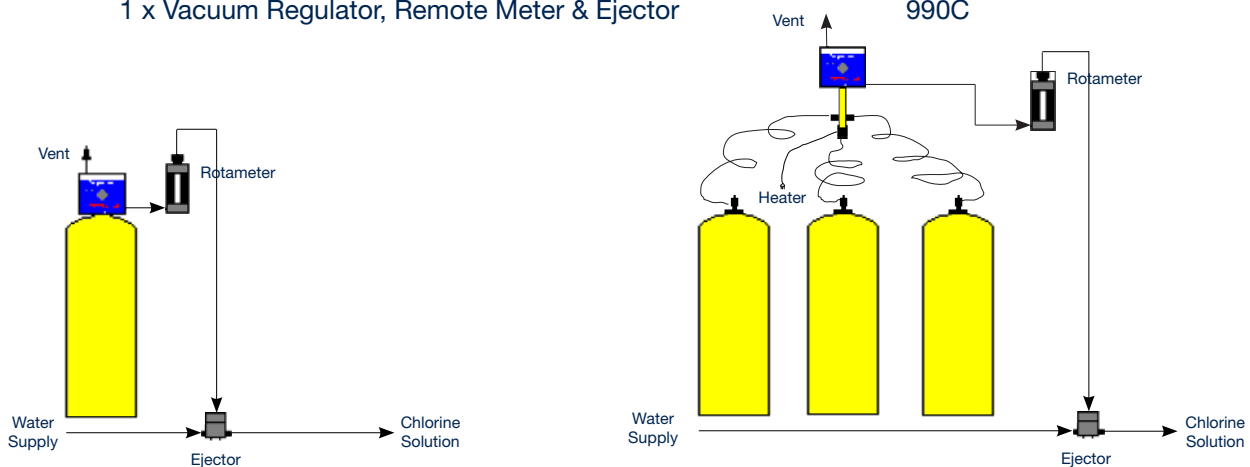


hydro Gas Chlorinators

PRICE LIST

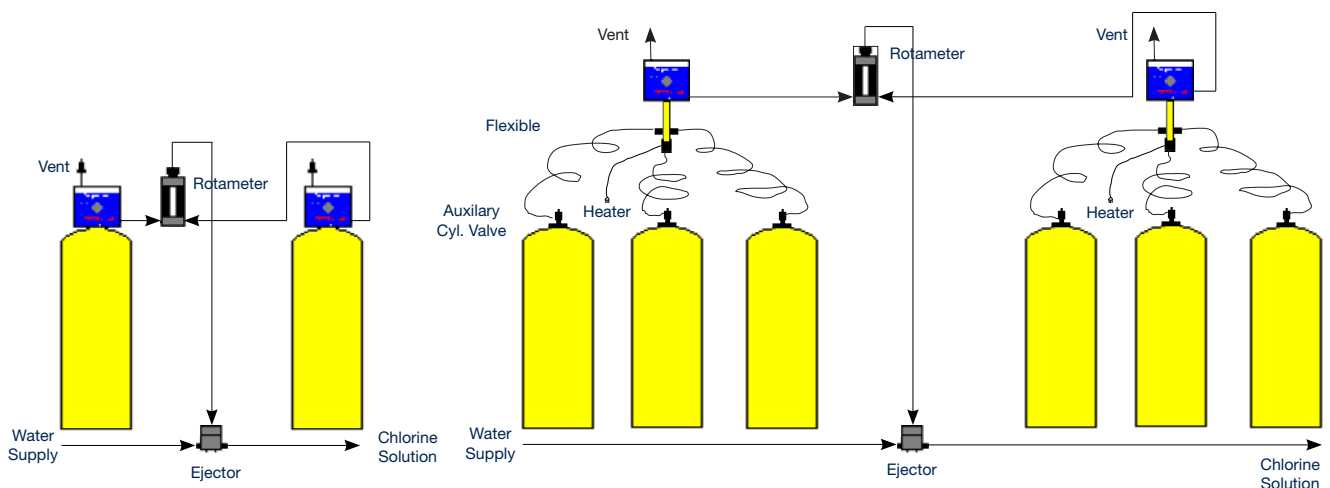
900 Series with ejector, remote meter & accessories

| Max. Capacity | | Part No: | List Price |
|--|--|----------|------------|
| Cylinder, Wall or Header Mounting - 900 series | | | |
| up to 2kg/hr systems (Note: header, heater, auxiliary valves & flexibles extra) | | | |
| 75 g/h | 1 x Vacuum Regulator, Remote Meter & Ejector | 920C | |
| 200 g/h | 1 x Vacuum Regulator, Remote Meter & Ejector | 921C | |
| 500 g/h | 1 x Vacuum Regulator, Remote Meter & Ejector | 922C | |
| 1000 g/h | 1 x Vacuum Regulator, Remote Meter & Ejector | 923C | |
| 2000 g/h | 1 x Vacuum Regulator, Remote Meter & Ejector | 924C | |
| Up to 4Kg/Hr Systems | | | |
| | 1 x Vacuum Regulator, Remote Meter & Ejector | 980C | |
| Up to 10Kg/Hr Systems | | | |
| | 1 x Vacuum Regulator, Remote Meter & Ejector | 990C | |



In-Built Auto Changeover System (max 2 Vacuum Regulators) - 900 series

| | | | |
|--|--|------|--|
| up to 2kg/hr systems (Note: header, heater, auxiliary valves & flexibles extra) | | | |
| 75 g/h | 2 x Vacuum Regulator, Remote Meter & Ejector | 935C | |
| 200 g/h | 2 x Vacuum Regulator, Remote Meter & Ejector | 945C | |
| 500 g/h | 2 x Vacuum Regulator, Remote Meter & Ejector | 955C | |
| 1000 g/h | 2 x Vacuum Regulator, Remote Meter & Ejector | 965C | |
| 2000 g/h | 2 x Vacuum Regulator, Remote Meter & Ejector | 975C | |
| Up to 4Kg/Hr Systems | | | |
| | 2 x Vacuum Regulator, Remote Meter & Ejector | 985C | |
| Up to 10Kg/Hr Systems | | | |
| | 2 x Vacuum Regulator, Remote Meter & Ejector | 995C | |

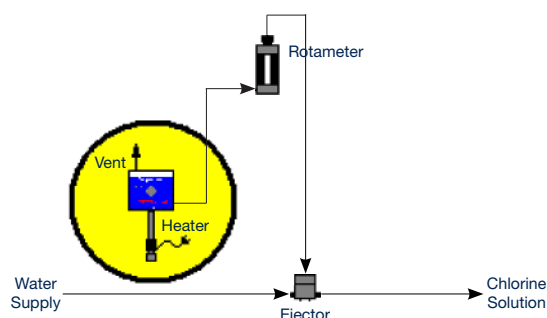


hydro Gas Chlorinators

PRICE LIST

900 Series with ejector, remote meter & accessories

| Max. Capacity | | Part No: | List Price |
|----------------------------------|--|----------|------------|
| TON Mounting - 900 series | | | |
| up to 2kg/hr systems | | | |
| 75g/h | 1 x Vacuum Regulator, Remote Meter & Ejector | 943C | |
| 200g/h | 1 x Vacuum Regulator, Remote Meter & Ejector | 944C | |
| 500g/h | 1 x Vacuum Regulator, Remote Meter & Ejector | 954C | |
| 1000g/h | 1 x Vacuum Regulator, Remote Meter & Ejector | 964C | |
| 2000g/h | 1 x Vacuum Regulator, Remote Meter & Ejector | 974C | |
| up to 4kg/hr systems | | | |
| 4kg/h | 1 x Vacuum Regulator, Remote Meter & Ejector | 984C | |
| up to 10kg/hr systems | | | |
| 10kg/h | 1 x Vacuum Regulator, Remote Meter & Ejector | 994C | |



In-Built Auto Changeover System (max 2 Vacuum Regulators) - 900 series

up to 2kg/hr systems

In-Built Auto Changeover System (1 drum per side)

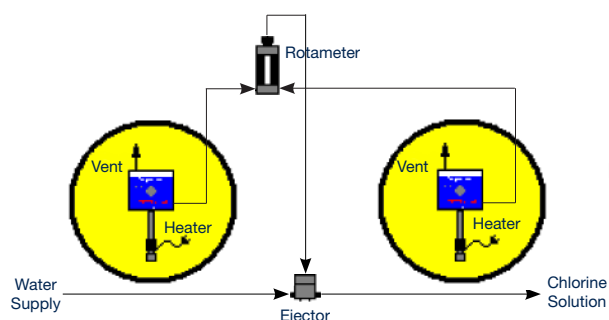
| | | |
|---------|--|------|
| 75g/h | 2 x Vacuum Regulator, Remote Meter & Ejector | 936C |
| 200g/h | 2 x Vacuum Regulator, Remote Meter & Ejector | 946C |
| 500g/h | 2 x Vacuum Regulator, Remote Meter & Ejector | 956C |
| 1000g/h | 2 x Vacuum Regulator, Remote Meter & Ejector | 966C |
| 2000g/h | 2 x Vacuum Regulator, Remote Meter & Ejector | 976C |

In-Built Auto Changeover System (1 drum per side)

| | | |
|-------|--|------|
| 4kg/h | 2 x Vacuum Regulator, Remote Meter & Ejector | 986C |
|-------|--|------|

In-Built Auto Changeover System (1 drum per side)

| | | |
|--------|--|------|
| 10kg/h | 2 x Vacuum Regulator, Remote Meter & Ejector | 996C |
|--------|--|------|



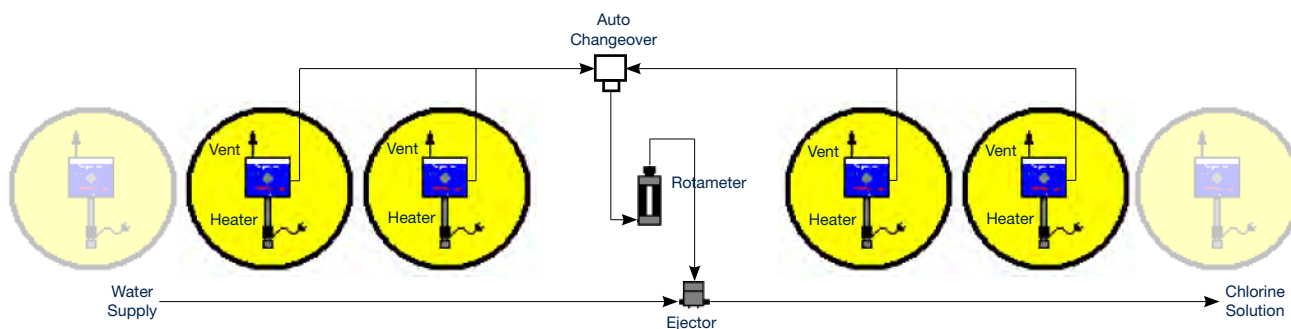
Note: All Ton mounting regulators, vertical & horizontal headers are fitted with 240V heaters. We suggest connection via a Residual Current Device (RCD) safety switch. As an option 24v heaters can be supplied with 240V/24V transformers in enclosure at an extra cost, (will handle two heaters). **PA55002460**

hydro Gas Chlorinators

PRICE LIST

900 Series with ejector, remote meter & accessories

| Max. Capacity | | PFC Part No: | List Price |
|---|---|-----------------|---------------|
| TON Mounting - 900 series | | | |
| up to 2kg/hr systems | | | |
| Auto Changeover System (2 drum per side) | | | |
| 2000g/h | 4 x Vacuum Regulator, 1 x Remote Meter, 1 x Auto Changeover & 1 x Ejector | 976C-2X2 | |
| up to 4kg/hr systems | | | |
| Auto Changeover System (2 drum per side) | | | |
| 4kg/h | 4 x Vacuum Regulator, 1 x Remote Meter, 1 x Auto Changeover & 1 x Ejector | 986C-2X2 | |
| up to 10kg/hr systems (2 drum per side) | | | |
| Auto Changeover System | | | |
| 10kg/h | 4 x Vacuum Regulator, 1 x Remote Meter, 1 x Auto Changeover & 1 x Ejector | 996C-2X2 | |



Note: For systems using more than 2 drums a side add the cost of extra vacuum regulators required.

Note: If more than 10kg required use 20/40 kg Rotameter, Auto Changeover, Ejector or see High Capacity systems.

Note: Multiple 900 series vacuum regulators can be drum mounted, however when two or more containers or more than 10kg/hr is required there may be unequal draw down thus leaving some Cl_2 in a drum at time of closedown.

In this case use either;

a) Header mounted vacuum regulator or

b) Sequential change over. (see below and Sydney office for more information on this).

hydro Gas Chlorinators

PRICE LIST

Sequencing System for an all vacuum arrangement

The preferred arrangement for all gas chlorination systems, both cylinders and drums, is full vacuum with a vacuum regulator (vac reg) mounted directly on the cylinder/drum.

A pressure system using auxillary valves, flexible connections and steel headers is available where an all vacuum system is not practical, i.e. in some 40 or 80 kg/hr systems etc. In these cases the vac reg is mounted on the pressure header.

The normal withdrawal rate with full vacuum systems, is 2 kg/hr from 70 kg cylinders and 10 kg/hr from 920kg drums at a minimum room temperature of 4deg C.

When there is a requirement for above 2kg/hr with cylinders and above 10 kg/hr using drums, it has been normal practice to add a vac reg to a second cylinder or drum and to manifold two or more vac regs together via vacuum lines.

The use of full vacuum systems on multiple drums can lead to an uneven draw down. Thus if there were two duty drums with auto changeover to two standby drums, one of the first two drums would empty and as the second drum could not supply more than 10 kg/hr, the change over valve would select the second set of two drums, thus leaving some chlorine in one of the first set of drums.

NB: in many systems with capacities of more than 10 kg/hr the actual use is less than 10 kg/hr and thus there is no problem with the two plus two system.

This is not a problem when using a pressure header as both drums will empty at the same time. However, a pressure system is not as safe as a full vacuum system.

For full vacuum systems that will run at above 2kg/hr for cylinders and 10 kg/hr for drums we have a sequencing system.

A 4 drum sequencing system consists of;

4 x Solenoid valves (chlorine under vacuum type) mounted prior to each vacuum regulator.

A control panel which can select the required no of drums to be in service with visual indication for: drum- **In Service- Standby- Empty**. **NB:** The empty indicator flashes.

In operation the low weight contact signal from the chlorine scales is used to close the solenoid valve to the empty drum and open the solenoid valve to an available drum.

An alternate to drum scales is a Chlorine gas low flow switch in the line to each vac reg plus a low flow switch on the Rotameter which verifies that the plant is running.

When using the weight signal the system indicates which drums are available. The system allows the operator to select from 1 to 4 drums on at a time.

There is no limit to the no of drums that can be added.

Price for a 4 drum system with a scale for each drum;

Control panel and 4 x solenoid valves is

Each additional drum is ...

Price for 4 drum system not having scales for each drum;

Control panel and 4 x solenoid valves is

Add: 4 x Chlorine gas flow switches -1 x Rotameter flow switch.

Each additional drum is ...

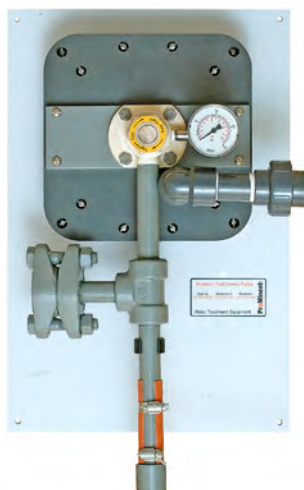
NB: The system with gas flow switches adds extra \$ however, there may not be a need for scales, as the system indicates, **In Service, Standby and Empty**.

hydro Gas Chlorinators

PRICE LIST

900 Series Equipment Components

| Max. Capacity | PFC Part No: | List Price |
|--|-----------------|---------------|
| Bottle, Vertical Wall or Horizontal Header Mount - 900 series | | |
| up to 2kg/hr systems | | |
| Vacuum regulator | SVR-100-CL2 | |
| Ejector | EJ1000 | |
| Remote meter | MPH-100-CL2 | |
| Change Over Valve | SO1000 | |
| up to 4kg/hr systems | | |
| Vacuum regulator | SVR-250-CL2 | |
| Ejector | EJ2000 | |
| Remote meter | MPH-250-CL2 | |
| Change Over Valve | SO2000 | |
| up to 10kg/hr systems | | |
| Vacuum regulator | SVR-500-CL2 | |
| Ejector | EJ5000 | |
| Remote meter | MPH-500-CL2 | |
| Change Over Valve | SO5000 | |
| TON Mount - 900 series | | |
| up to 2kg/hr systems | | |
| Vacuum regulator | SVR-10T-CL2 | |
| Ejector | EJ1000 | |
| Remote meter | MPH-100-CL2 | |
| Change Over Valve | SO1000 | |
| up to 4kg/hr systems | | |
| Vacuum regulator | SVR-25T-CL2 | |
| Ejector | EJ2000 | |
| Remote meter | MPH-250-CL2 | |
| Change Over Valve | SO2000 | |
| up to 10kg/hr systems | | |
| Vacuum regulator | SVR-50T-CL2 | |
| Ejector | EJ5000 | |
| Remote meter | MPH-500-CL2 | |
| Change Over Valve | SO5000 | |



20-40 Vacuum Regulator
VRH-2000-CL2

hydro Gas Chlorinators

PRICE LIST

High Capacity Manifold Mount Chlorination 20kg & 40 Kg

Max.
Capacity

PFC
Part No:

List
Price

NOTE: For up to 15 kg/hr 900 series vacuum regulators can be used.

Single System

up to 20 kg Vacuum Regulator, Remote Meter, Ejector & accessories 3103C

up to 40 kg Vacuum Regulator, Remote Meter Ejector & accessories 3113C

Switch-Over System

up to 20 kg 2 x Vacuum Regulator, Remote Meter, Ejector, Switch-over & accessories 3105C

up to 20 kg 2 x Vacuum Regulator, Remote Meter, Ejector, Switch-over & accessories 3115C

Components only

Vacuum Regulator

up to 40 kg Vacuum Regulator, No meter & No ejector. VRH-2000-CL2

Ejectors

20 kg High Capacity 2" Flanged Ejector. EJH-1000-CL2

40 kg High Capacity 2" Flanged Ejector. EJH-2000-CL2

Remote Meters

20 kg including flow tube and rate valve. RMH-1000-CL2

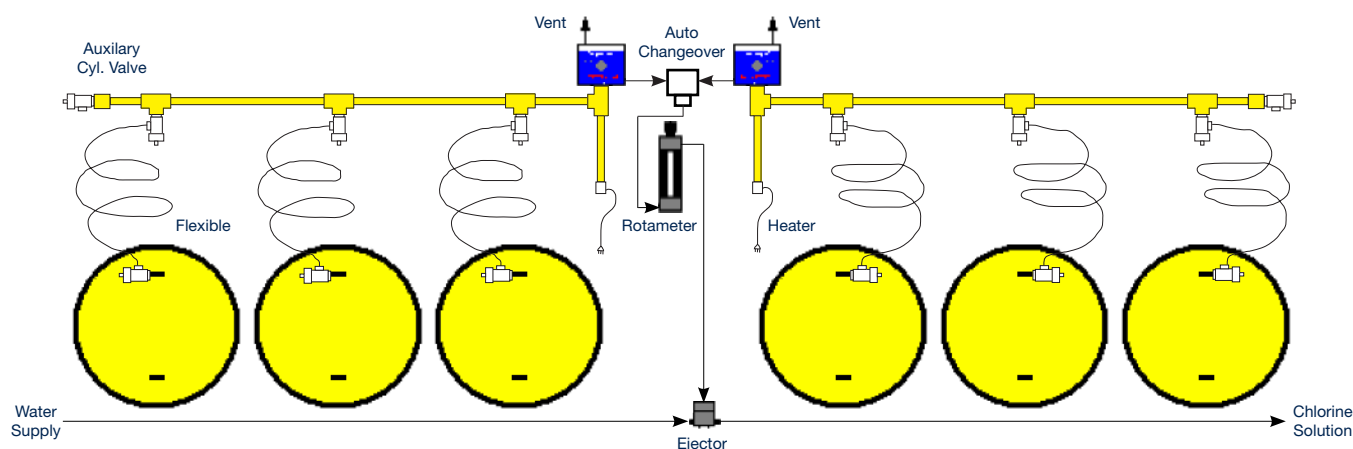
40 kg including flow tube and rate valve. RMH-2000-CL2

Switchover Modules

20 kg. SOH-2000-CL2

40 kg. SOH-4000-CL2

Note: header, heater, auxiliary valves & flexibles extra see prices for this or complete header (manifold) .



Note: All Ton mounting regulators, vertical & horizontal headers are fitted with 240V heaters.

We suggest connection via a Residual Current Device (RCD) safety switch. As an option 24v heaters can be

supplied with 240V/24V transformers in enclosure at an extra cost, (will handle two heaters).

PA55002460

hydro Gas Chlorinator



Flow proportioning Systems 900 Series

Each System includes a standard chlorinator unit (vacuum regulator, remote meter, and ejector), an Omni-Valve (automatic flow control valve) complete with standard fitting kit.

The Omni-Valve and remote meter are fitted on a backboard pre-piped ready to mount on the wall.

| Max. Capacity | Regulator Mounting Method | PFC Part No: | List Price |
|---------------|---|---------------|---------------|
| 2 kg/hr | Cyl. or wall mounting (0.2, 0.5, 1 or 2 kg/hr capacity) * <u>one 900 series vacuum regulator</u> | PA2400-FP920 | (920C+OV-110) |
| 2 kg/hr | Cyl. or wall mounting (0.2, 0.5, 1 or 2 kg/hr capacity) * & in-built auto changeover <u>two 900 series vacuum regulators</u> | PA2400-FP965 | (965C+OV-110) |
| 4 kg/hr | Wall or Manifold mounting <u>one 900 series vacuum regulator</u> | PA2400-FP980 | (980C+OV-110) |
| 4 kg/hr | Wall mounting & in-built auto changeover. <u>two 900 series vacuum regulators</u> | PA2400-FP985 | (985C+OV-110) |
| 4 kg/hr | Ton mounting <u>one 900 series vacuum regulator</u> | PA2400-FPT981 | (981C+OV-110) |
| 4 kg/hr | Ton mounting & in-built auto changeover. <u>two 900 series vacuum regulators</u> | PA2400-FPT986 | (986C+OV-110) |
| 10 kg/hr | Ton mounting (10 kg/hr capacity) <u>one 900 series vacuum regulator</u> | PA2400-FP991 | (991C+OV-110) |
| 10 kg/hr | Ton mounting & in-built auto changeover. <u>two 900 series vacuum regulators</u> | PA2400-FP996 | (996C+OV-110) |

* nominate 0.2, 0.5, 1 or 2 kg/hr capacity



OMNI-VALVE FOR AUTOMATIC FEED OF CHLORINE GAS

- Linear drive design eliminates rotary motion - means minimal wear.
- Max Capacity: 40kg per hr.
- 2 line x 20 character display.
- Control Modes:
 - Manual, Flow Pacing, Proportional, Residual, ORP, Compound Loop (PID) and Step-Feed.
 - Contact alarm output and offers standard 4-20 mA output.
 - Ten point linearization process for accurate control.
 - Includes delays, filters and threshold adjustment.

OMNI-VALVE SELECTION CHART

| g/hr | Part No: |
|-------|------------------------|
| 200 | OV-110-1-C-1-2-1-1-1-1 |
| 500 | OV-110-1-C-2-2-1-1-1-1 |
| 1000 | OV-110-1-C-3-2-1-1-1-1 |
| 2000 | OV-110-1-C-4-2-1-1-1-1 |
| kg/hr | Part No: |
| 5 | OV-110-1-C-5-2-1-1-1-1 |
| 10 | OV-110-1-C-6-2-1-1-1-1 |
| 20 | OV-110-1-C-7-2-1-1-1-1 |
| 40 | OV-110-1-C-8-2-1-1-1-1 |

hydro Gas Chlorinator

Accessories

ProMinent ProGuard Series 3 Chlorinator Shut Off Control Package for Drums or Cylinders (Bottles)

Part A

Wall mounted Master control cabinet for activation of one or multiple pneumatic auto valve close ratchets. Power required, 240 volt.

Bottled air or nitrogen required plus regulator, (by others).

Features,

- Fail safe pneumatic operation with low pressure alarm.
 - 240 volt operation with over 8 hours battery back-up.
 - Operates from alarm contact on chlorine leak detector, (Separate supply). For up to 4 cyl/drums
- For **more** than 4 cyl/drums



Part A PA24002937

Part A PA24002938

Part B

Bottle Mounting 1 x Pneumatic cylinder and ratchet assembly with special bracket for mounting on each vacuum regulator.

Part B PA24112715

TON Mounting 1 x Pneumatic cylinder and ratchet assembly with special bracket for mounting on each vacuum regulator.

Part B PA24122715

Pressure Header 1 x Pneumatic cylinder and ratchet assembly with special bracket for mounting on each auxiliary valve.

Part B PA24002716

Extras: auxiliary valve Part No: IVH-100-500 (Price on page 11), plus copper flexibles with 3/4" unions (Price and P/N on page 11), or complete horizontal or vertical header if required (Price and P/N on page 11).

Quantity required:

For one drum or cylinder add 1 x Part A + 1 x Part B

For up to 8 drums, cylinders or header add 1 x Part A + Part B x number of drums or cylinders required.

Note: Vacuum systems

Both Part B above, Bottle & Ton, are suitable for Hydro 900 series

Vacuum Regulators. (For retro fitting to Hydro 500, 200 and 700 series consult Sydney office).

Note: for 500 series bottle mount, the clamp yoke will have to be changed to P/No: A24072717

Air or Nitrogen Regulator available from BOC Gasses approx \$156

ORICA Both Hydro bottle mount and Ton mount vacuum regulators can be fitted with an extension arm to allow fitting of **ORICA auto valve closing**.

Extra Price per Cylinder

Extra Price per Ton mount

Note: the above will also fit Acromet and W & T (with appropriate adaptor)

Chlorine Leak Detector

Chlorine Leak Detector, with single Digital Sensor & Battery Back-up.

Chlorine Leak Detector, with dual Digital Sensors & Battery Back-up.

4-20mA Output **Note: Outputs for each sensor (up to 4) for one price**

Replacement Sensor Element only 0-10 ppm

Replacement Sensor 0-10 ppm

Replacement Sensor cable

GA-170-1-5-5-5-2-2-1-1

GA-170-1-1-5-5-2-2-1-1

GA-170-X-X-X-X-1-2-1-2

GA-SEO-CL2-10

GA-CRS-CL2-10

GA-170-CABLE

Features

- Up to 4 Digital Sensors
- User friendly key pad interface for easy calibration and operation.
- Up to 10 contact relays available.
- Backlit Liquid Crystal Display (LCD) for easy reading, 2 line, 16 spaces.
- Built-in 90 dB audible alarm and danger/warning LED's
- 24 Hour Battery Back-Up included
- RS232 Output Option
- 4-20 mA Output Option
- Remote Acknowledge as standard
- Password Protection



hydro Gas Chlorinator Accessories

Chlorine Drum Vacuum Regulator Lifting Device

VRL-900

Prominent can now supply a lifting system for placing Vacuum regulators on to 920kg Chlorine drums.

This floor mounted VRL-900 allows the Vacuum Regulator to be easily removed from the chlorine drum outlet valve and replaced on a new drum outlet valve.

The VRL-900 is adjustable for height as well as horizontal positioning with limited rotation to ensure connection to alternate drums and drum valve position.

The VRL-900 is suitable for drums floor mounted or on scales, and is adaptable to trolley mounted drums.

The VRL-900 is especially useful when a Proguard (automatic valve closing system) is used due to the extra weight.

The VRL-900 provides support for the Vacuum Regulator during the change over from drum to drum. It also reduces possible operator contact with the drip leg heater. It's designed to allow the Vacuum Regulator to be removed vertically at any time without restriction.

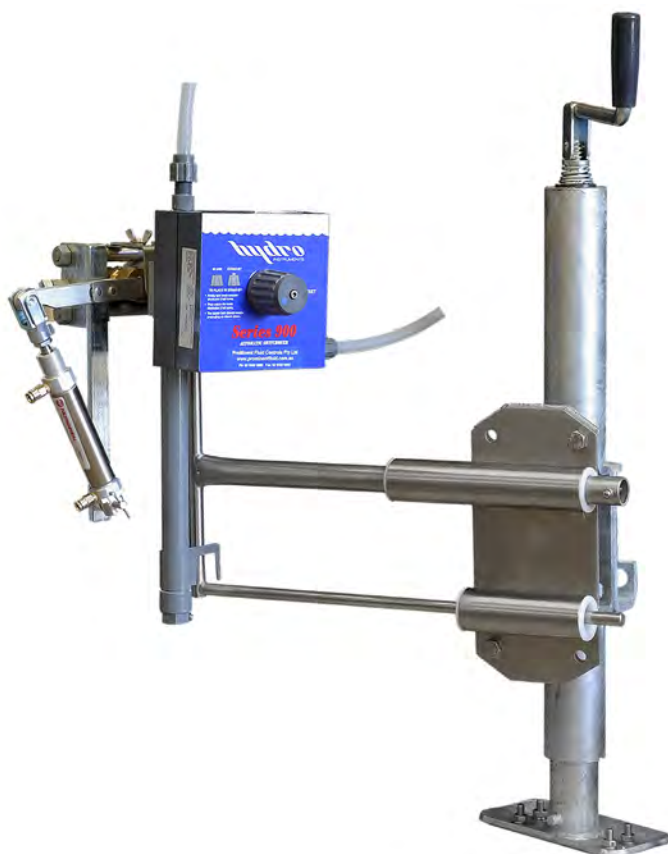
Note: Consideration must be given to ensure that the unit does not restrict the designated walkway.

Model VRL-900

PA24003194

Additional Bracket for Trolley Mount Systems

A240E3204



hydro Gas Chlorinator

Accessories

Part No: List Price

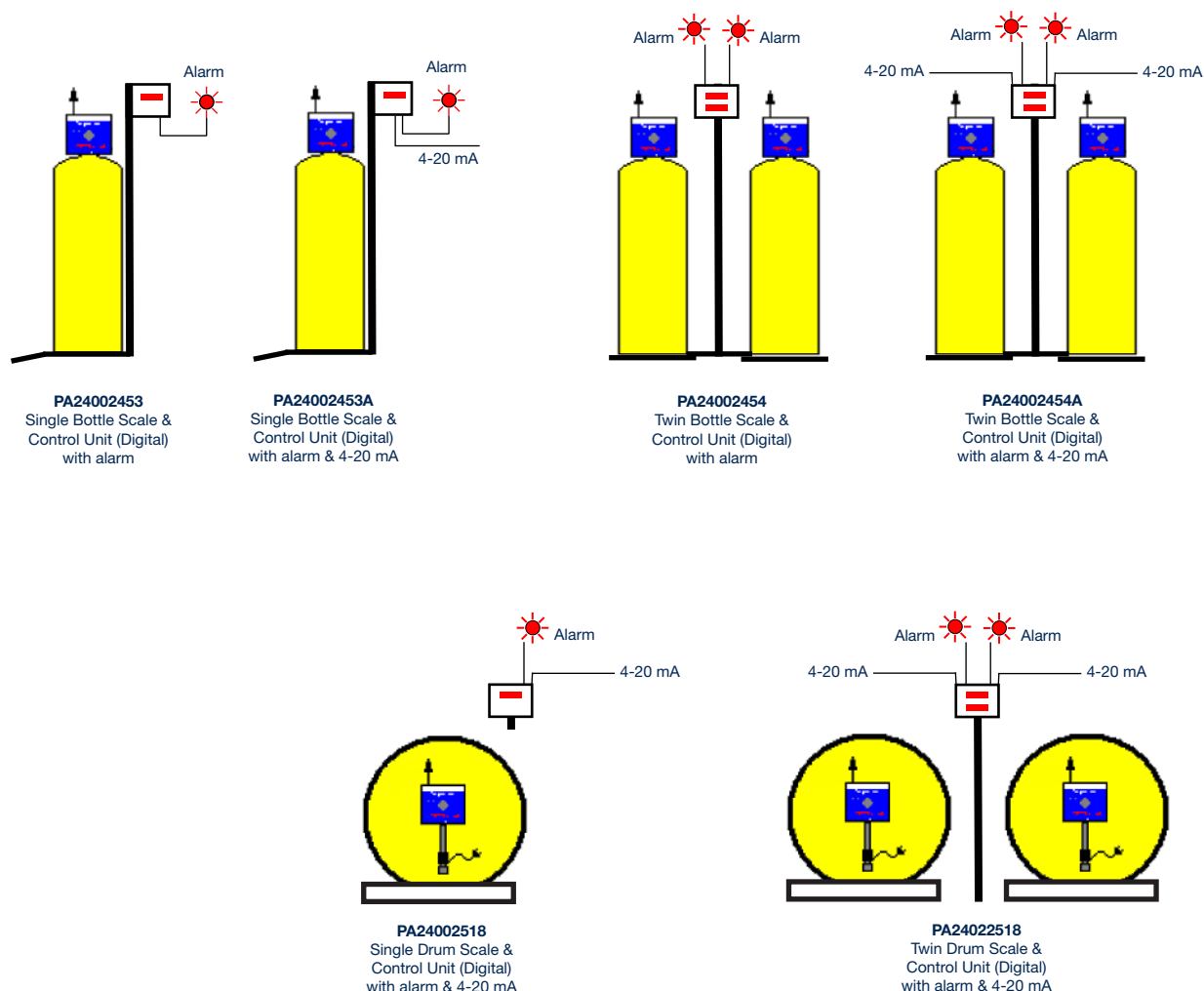
Bottle & Drum Scales

| | |
|--|-------------|
| Single Bottle Scale & 1 Control Unit (Digital) with alarm | PA24002453 |
| Single Bottle Scale & 1 Control Unit (Digital) with alarm & retransmit 4-20mA signal | PA24002453A |
| Twin Bottle Scale & 2 Control Unit (Digital) with 2 alarms | PA24002454 |
| Twin Bottle Scale & 2 Control Unit (Digital) with 2 alarms & 2 retransmit 4-20mA signal | PA24002454A |
| Single Drum Scale & 1 Control Unit (Digital) with alarm & retransmit 4-20mA signal | PA24002518 |
| Twin Drum Scale & 2 Control Unit (Digital) with 2 alarm & 2 retransmit 4-20mA signal | PA24022518 |
| Trolley & Single Drum Scale & 1 Control Unit (Digital) with alarm & retransmit 4-20mA signal | |
| Trolley only for Single Drum | |

For other options contact Sydney Office.

Safety Chains

| | |
|--|------------|
| Safety Chains & Brackets single bottle | PA31001935 |
| Safety Chains & Brackets dual bottles | PA31001936 |

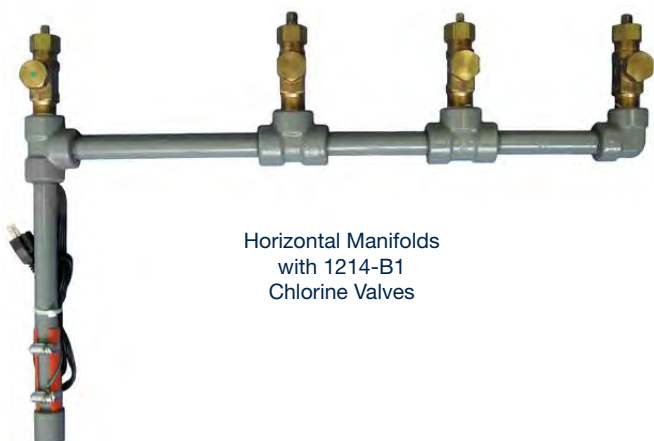


hydro Gas Chlorinator

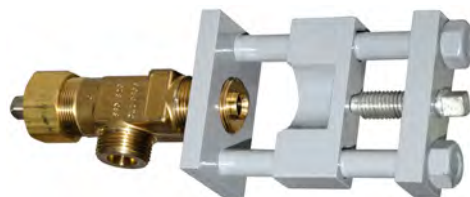
Accessories

| | Part No: | List Price |
|--|--------------|------------|
| Pressure Connections: | | |
| Auxiliary Cylinder Valve, 3/4" inlet and outlet. | IVH-100-500 | |
| Flexible Connection cad. plated annealed copper with 3/4" unions, (W & T type drum connection). | | |
| 1.8m length ... TON | FX-06 | |
| 1.0m length ... Bottle | FX-04 | |
| Superior Chlorine Valve, for horizontal header mounting. | 1214-B1 | |
| Vertical Headers: | | |
| Vertical Wall Header, painted steel c/w drip leg with 3/4" flat face connections & Heater | | |
| NB: top connection for optional pressure gauge, suitable for: | 1 x Cylinder | PA24002412 |
| | 2 x Cylinder | PA24002413 |
| | 3 x Cylinder | PA24002414 |
| Adaptor 3/4" BSPP male to 5/8" UNF male, plated brass. | A24002182 | |
| Horizontal Header: | | |
| Each header (manifold) comes complete with header valve for vacuum regulator, drip leg & heater, and for EACH connection 1 x header valve, 1 x auxiliary valve & 1 x flexible connection. | | |
| | 2 x drums | HM-122 |
| | 3 x drums | HM-123 |
| | 4 x drums | HM-124 |
| Chlorine Manifold Y-Strainer (weight 2 kg) | | |
| Carbon Steel Body, Monel Screen, Lead Gasket Sealed Cover 3/4" NPT | RH-6786 | |
| Chlorine Manifold Filter (weight 20 kg) | | |
| 25,000 lb. tensile strength grey iron casting rated at 560 psi (38 bar), and comes with removable filter cartridge. Acts as a filter and condensate trap. | C-282 | |
| Heater for header mounting, 240V AC, 30W <i>NB: Use RCD Safety Switch</i> <i>This is for all for 200, 500, 700 & 900 series Ton mount vacuum regulators</i> | A24002479 | |
| Optional heater for header mounting, 24V AC, 25W c/w 240v transformer | PA55052460 | |
| Note: for second 24v heater add \$ 212 (max. 2 heaters per transformer). | | |
| For extra ton units Power Supply: 2 x 24V60Va 240V Supply | PA55002460 | |
| Heater for ton mounting drip leg, 24V AC, 25W, (75 x 50 pad) | 84A24V | |
| Universal TON mounting Drip Leg c/w heater | PA-TUY-1 | |
| Complete Dripleg assembly for 900 series Ton Mount Vacuum Regulator | VRH-999-500 | |
| Injection Systems: | | |
| <u>Withdrawable</u> * PVC Injection lance, with 20mm hose tail, inc. SS valve & nipple | PA07621807 | |
| <u>Withdrawable</u> * PVC injection lance, with 25mm hose tail, inc. SS valve & nipple | PA07621808 | |
| * Note: Suitable for maximum of 2 kg/h chlorine. | | |
| <u>Non Withdrawable</u> PVC Injection/Diffuser tube c/w 1" BSPF | | |
| PVC valve & 25mm Hose Tail. Note: Suitable for maximum of 2 kg/h chlorine. | PA24921972 | |
| <u>Non Withdrawable</u> PVC Injection/Diffuser tube c/w 1 1/2" BSPF | | |
| PVC valve & 40mm Hose Tail. Note: Suitable for maximum of 10 kg/h chlorine. | PA24521971 | |
| Flexible Tubing: | | |
| E.V.A. Chlorine vacuum tubing 12 x 8mm. | A24001626 | |
| E.V.A. Chlorine vacuum tubing 17 x 12mm. | A24001737 | |
| Indicators | | |
| Auto vacuum change over Left/Right cylinder bank indicator, mounted in 175 x 125 PVC enclosure. Note: Requires auto changeover valve or extra remote meter | PA24002108 | |
| High/Low vacuum indicator fitted to remote meter, mounted in 175 x 125 PVC enclosure. Note: Requires remote meter | PA24002109 | |
| Note: if both PA24002108 and 2109 are used together total price can be reduced by \$435 | | |
| Special lubricant for O-Rings MOLYKOTE 100gm tube | FS 3452 | |
| Twisted Spanner | HTS-1 | |
| Vacuum Gauge 2-1/2" dia. Direct Mount with Diaphragm Protection | VGL-30 | |

hydro Gas Chlorinator Accessories



Horizontal Manifolds
with 1214-B1
Chlorine Valves



IVH-100-500
Auxiliary Cylinder Valve



Vertical Header



Filter C-282



PA-TUY-1
Universal Ton Drip Leg



1214-B1
Chlorine Valve
for Horizontal Header



1.8m FX-06 & 1.2m FX-04
Flexible connections
for Drums & Cylinders, *Tested*.



HTS-1
Twisted Spanner



Chlorine manifold
Inline Strainer RH-6786

A24002182
Adaptor for use with 1.8m
A24002107 & 1.0m A24002264
Flexible connections



Adaptors

15mm PVC Solvent Weld to 12 x 8 Tube
15mm PVC Solvent Weld to 17 x 12 Tube
15mm PVC Solvent Weld to 1/2" NPT

PA24002142
PA24001001
PA24022792



1/4" NPT O-Ring to 12 x 8 Tube
3/8" NPT O-Ring to 12 x 8 Tube
3/8" NPT O-Ring to 17 x 12 Tube
1/2" NPT O-Ring to 17 x 12 Tube

PA24001634
PA24001635
PA24001738
PA24022768

hydro Gas Chlorinator

Accessories

Solenoid operated Chlorine Gas Valve

This can be used in the following gas chlorination areas;

- a) Pulse duration in pools.
- b) Auto change over in combination with hi-low vacuum switch.
- c) Sequencing in combination with either of the following;

- 1) Weight
- 2) Pressure
- or 3) Flow

For more information consult Sydney office

To suit 12 x 8 tube, 17 x 12 tube or 15 mm (nominal) PVC Pipe for use with vacuum regulators up to 10kg/hr.

for 12 x 8 EVA tube P120309091-12

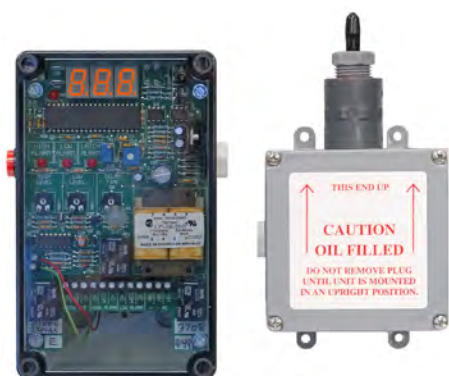
for 17 x 12 EVA tube P120309091-17

Can be supplied as shown or with 90 degree elbows top and bottom or any combination of these, please specify when ordering. Includes 24v AC 50 Hz power supply with 3 pin plug.

Replacement valve (including solenoid) 120309091.

Note: Can be controlled:

- a) By a switched 240 volt GPO.
- b) Through a volt free remote contact.



Vacuum Monitor

240 VAC 100% electronic, full featured monitoring system with a three digit digital readout. One low alarm, one high alarm and one latch relay. All relays are general purpose NO/NC type. (See Brochure).

VM-150



Check Valves for Gas Chlorine

Bodies of PVDF (Kynar) and all wetted parts of PTFE

| Description | Part No |
|-----------------------------------|-------------|
| Check Valve 1/4" FNPT 2,000 g/h | CHK-TFL-1/4 |
| Check Valve 3/8" FNPT 5,000 g/h | CHK-TFL-3/8 |
| Check Valve 1/2" FNPT 10,000 g/h | CHK-TFL-1/2 |
| Adaptor 1/4" NPS M/M with O-Rings | PA24003231 |
| Adaptor 3/8" NPS M/M with O-Rings | PA24003232 |
| Adaptor 1/2" NPS M/M with O-Rings | PA24003233 |

hydro Gas Chlorinators

PRICE LIST

Standard Accessories supplied with series 900 Chlorinators

PA24002779 Bottle / Manifold Mount up to 2kg

Consisting of:

| | | |
|------|-----------------------------|-------------|
| 1 x | Cable Tie | CT-200-4C |
| 1 x | Insect Screen | A24001623 |
| 2 x | O-Rings - Ejector | OH-BUN-121 |
| 10 x | Lead Cylinder Gaskets | LG-100 |
| 1 x | Squeeze Bottle for Amonia | A24001622 |
| 1 x | Cylinder Spanner | A24001624 |
| 1 x | Filter - Teflon | VRH-456-100 |
| 1 x | Replacement Filter | VRH-455-500 |
| 10 | meters Vacuum Tubing 12 x 8 | A24001626 |

Ton Mount from 2 to 10kg

PA24002780

Consisting of:

| | | |
|------|-----------------------------|-------------|
| 1 x | Cable Tie | CT-200-4C |
| 1 x | Insect Screen | A24001623 |
| 2 x | O-Rings - Ejector | OH-BUN-121 |
| 10 x | Lead Cylinder Gaskets | LG-100 |
| 3 x | Lead Gasket | G-332 |
| 1 x | Squeeze Bottle for Amonia | A24001622 |
| 1 x | Cylinder Spanner | A24001624 |
| 1 x | Replacement Filter | VRH-455-500 |
| 10 | meters Vacuum Tubing 12 x 8 | A24001626 |

Note: 10kg uses 17x12 vacuum tube



Twin Bottle Scale & Control Unit



Twin Drum Scale & Control Unit

hydro Gas Chlorinator Service Kits

900 series 2kg Vacuum Regulator

PA24002855

| Item | Part No | Description | Qty |
|------|-------------|-------------|-------------------------|
| 9 | OH-CEM-114 | O-Ring | 1 |
| 15 | OH-VIT-212 | O-Ring | 1 |
| 19 | OH-VIT-112 | O-Ring | 1 |
| 22 | VRH-456-100 | Filter | 1 |
| 26 | OH-VIT-011 | O-Ring | 1 |
| 27 | VRH-110-500 | Valve Seat | 1 |
| 31 | OH-VIT-332 | O-Ring | 1 |
| 35 | OH-VIT-028 | O-Ring | 1 |
| 36 | 3PS-112 | O-Ring | 2 |
| | LG-100 | Lead Washer | 10 (Bottle or Manifold) |
| | LG-332 | Lead Washer | 2 Drip Leg only |

900 series 4kg Vacuum Regulator

PA24002856

| Item | Part No | Description | Qty |
|------|-------------|--------------|-------------------------|
| 9 | OH-CEM-114 | O-Ring | 1 |
| 15 | OH-VIT-212 | O-Ring | 1 |
| 19 | OH-VIT-112 | O-Ring | 1 |
| 22 | VRH-101-500 | Inlet Screen | 1 |
| 23 | VRH-455-500 | Filter Floss | 1 |
| 26 | OH-VIT-011 | O-Ring | 1 |
| 27 | VRH-110-500 | Valve Seat | 1 |
| 31 | OH-VIT-332 | O-Ring | 1 |
| 35 | OH-VIT-028 | O-Ring | 1 |
| 36 | 3PS-112 | O-Ring | 2 |
| | LG-100 | Lead Washer | 10 (Bottle or Manifold) |
| | LG-332 | Lead Washer | 2 Drip Leg only |

900 series 10kg Vacuum Regulator

PA24002857

| Item | Part No | Description | Qty |
|------|-------------|--------------|-------------------------|
| 9 | OH-CEM-114 | O-Ring | 1 |
| 15 | OH-VIT-212 | O-Ring | 1 |
| 19 | OH-VIT-112 | O-Ring | 1 |
| 22 | VRH-101-500 | Inlet Screen | 1 |
| 23 | VRH-455-500 | Filter Floss | 1 |
| 26 | OH-VIT-011 | O-Ring | 1 |
| 27 | VRH-110-500 | Valve Seat | 1 |
| 31 | OH-VIT-332 | O-Ring | 1 |
| 35 | OH-VIT-028 | O-Ring | 1 |
| 36 | 3PS-112 | O-Ring | 1 |
| | 481034 | O-Ring | 1 |
| | LG-100 | Lead Washer | 10 (Bottle or Manifold) |
| | LG-332 | Lead Washer | 2 Drip Leg only |

DIH-106-500 Diaphragm suit ALL 900 series vacuum regulators

900 series 2-4kg Ejector

PA24002858

| Item | Part No | Description | Qty |
|------|-------------|-------------------|-----|
| 4 | OH-CEM-210 | O-Ring | 1 |
| 6 | DIH-104-500 | Diaphragm | 1 |
| 7 | DIH-105-500 | Diaphragm Support | 1 |
| 8 | EJH-146-500 | Diaphragm Nut | 1 |
| 11 | OH-BUN-121 | O-Ring | 2 |
| 15 | 3PS-112 | O-Ring | 1 |

hydro Gas Chlorinator

Service Kits

900 series 10kg Ejector

PA24002859

| Item | Part No | Description | Qty |
|------|-------------|-------------------|-----|
| 4 | OH-CEM-210 | O-Ring | 1 |
| 6 | DIH-104-500 | Diaphragm | 1 |
| 7 | DIH-105-500 | Diaphragm Support | 1 |
| 8 | EJH-146-500 | Diaphragm Nut | 1 |
| 13 | OH-BUN-121 | O-Ring | 2 |
| 18 | 3RS-116 | O-Ring | 1 |

900 series 75-2000 g/hr Remote Meter (MPH-100-CL2)

PA24002860

| Item | Part No | Description | Qty |
|------|-------------|------------------------|-----|
| 3 | OH-VIT-006 | O-Ring | 2 |
| 6 | OH-VIT-010 | O-Ring | 1 |
| 7 | OH-VIT-110 | O-Ring | 1 |
| 9 | GAH-VIT-101 | Meter Gasket 200 g/hr | 2 |
| 9 | GAH-VIT-102 | Meter Gasket 500 g/hr | 2 |
| 9 | GAH-VIT-103 | Meter Gasket 2000 g/hr | 2 |
| 13 | OH-VIT-112 | O-Ring | 2 |
| 16 | OH-VIT-012 | O-Ring | 2 |
| 19 | 3PS-112 | O-Ring | 2 |

900 series 4 kg/hr Remote Meter (MPH-250-CL2)

PA24002861

| Item | Part No | Description | Qty |
|------|-------------|----------------------|-----|
| 3 | OH-VIT-006 | O-Ring | 2 |
| 6 | OH-VIT-010 | O-Ring | 1 |
| 7 | OH-VIT-110 | O-Ring | 1 |
| 9 | GAH-VIT-104 | Meter Gasket 4 kg/hr | 2 |
| 13 | OH-VIT-112 | O-Ring | 2 |
| 16 | OH-VIT-012 | O-Ring | 2 |
| 19 | 3PS-112 | O-Ring | 2 |

900 series 10 kg/hr Remote Meter (MPH-500-CL2)

PA24002862

| Item | Part No | Description | Qty |
|------|-------------|---------------------|-----|
| 4 | OH-VIT-010 | O-Ring | 2 |
| 5 | OH-VIT-112 | O-Ring | 1 |
| 6 | GAH-VIT-116 | Meter Gasket Top | 1 |
| 8 | OH-VIT-012 | O-Ring | 2 |
| 11 | GAH-VIT-115 | Meter Gasket Bottom | 1 |
| 12 | OH-VIT-212 | O-Ring | 2 |
| 15 | 3RS-116 | O-Ring | 2 |

Seal Kit for Omni-Valve

for up to 10 kg O-Ring and Valve Seat Seal Kit

PA24002920

for 20 to 40 kg O-Ring and Valve Seat Seal Kit

PA24002921

hydro Gas Chlorinators

PRICE LIST

Service Kits

Part No:**List Price**

Service kit for Hydro HGC-500 and 200 2 kg/h and 4 kg/h Vacuum Regulator

PA24001586

| | | | | | |
|----------------|----|---|---------------|---------|-------------------------------------|
| Consisting of: | 2 | x | O-Ring | 3PS-029 | |
| | 1 | x | O-Ring | 3PS-106 | |
| | 2 | x | O-Ring | 3PS-110 | |
| | 2 | x | O-Ring | 3PS-112 | |
| | 1 | x | O-Ring | 3PS-156 | |
| | 1 | x | O-Ring | 3PS-214 | |
| | 1 | x | O-Ring | 3RS-006 | |
| | 1 | x | O-Ring | 3RS-009 | |
| | 1 | x | O-Ring | 3RS-010 | |
| | 2 | x | O-Ring | 3RS-012 | |
| | 1 | x | O-Ring | 3RS-014 | |
| | 1 | x | O-Ring | 3RS-016 | |
| | 10 | x | Gasket (Lead) | LG-100 | |
| | 4 | x | Gasket | MG-001 | *** |
| | 1 | x | Seat | YP-101A | |
| | 2 | x | Filter | T-210 | (Note: for 200 series S-275 Filter) |

*** Note: Please advise Flow Meter capacity.

Service kit for Hydro HGC-700 10 kg/h Vacuum Regulator

PA24001585

| | | | | | |
|----------------|----|---|---------------|---------|--|
| Consisting of: | 1 | x | O-Ring | 3PS-112 | |
| | 1 | x | O-Ring | 3PS-156 | |
| | 1 | x | O-Ring | 3PS-214 | |
| | 1 | x | O-Ring | 3PS-029 | |
| | 1 | x | O-Ring | 3RS-006 | |
| | 1 | x | O-Ring | 3RS-009 | |
| | 1 | x | O-Ring | 3RS-010 | |
| | 1 | x | O-Ring | 3RS-012 | |
| | 1 | x | O-Ring | 3RS-014 | |
| | 1 | x | O-Ring | 3RS-114 | |
| | 1 | x | O-Ring | 3RS-203 | |
| | 2 | x | O-Ring | 3RS-212 | |
| | 1 | x | O-Ring | 3PS-332 | |
| | 10 | x | Gasket (Lead) | LG-100 | |
| | 1 | x | Gasket (Lead) | LG-332 | |
| | 1 | x | Seat | YP-101A | |
| | 1 | x | Filter | S-275 | |
| | 1 | x | Filter Pad | FG-40 | |

NOTE: Recommended grease - Molykote FS3452

hydro Gas Chlorinators

PRICE LIST

SERVICE KITS

Part No**List Price**

Auto Changeover for 500, 200 and 700 series SO1000 2kg, SO2000 4kg, SO5000 10kg

PA24001995

| | | | | |
|----------------|---|---|-------------------|---------|
| Consisting of: | 2 | x | Rolling Diaphragm | SM-112 |
| | 1 | x | O-Ring | 3RS-023 |
| | 2 | x | O-Ring | 3RS-203 |
| | 2 | x | Diaphragm Nut | SM-111 |

EJ1000 2 kg Ejector 500 series

PA24001587

| | | | | |
|----------------|---|---|--------------------|---------|
| Consisting of: | 1 | x | O-Ring | 3RS-203 |
| | 2 | x | O-Rings | 3PS-214 |
| | 1 | x | Rolling Diaphragm | SM-112 |
| | 1 | x | Check Assembly Nut | E-552 |

EJ2000 200 series 4 kg & EJ5000 700 series 10 kg Ejector

PA24001588

| | | | | |
|----------------|---|---|--------------------|---------|
| Consisting of: | 1 | x | O-Ring | 3RS-203 |
| | 2 | x | Gasket | 3PS-214 |
| | 1 | x | Rolling Diaphragm | SM-112 |
| | 1 | x | Check Assembly Nut | E-552 |

Vacuum Regulator Diaphragm Assy for 500, 200 and 700 series 2-10kg

PA24002154

| | | | | |
|----------------|---|---|-------------|---------|
| Consisting of: | 1 | x | Front Plate | DP100A |
| | 1 | x | Rear Plate | DP101A |
| | 1 | x | Vent Bolt | DP-102A |
| | 2 | x | Diaphragm | DP-103 |
| | 2 | x | O-Rings | 3PS-029 |

Ejector Diaphragm Assembly for 500, 200 and 700 series

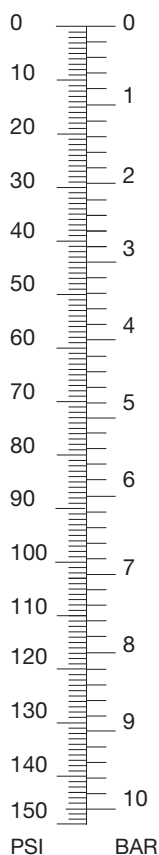
PA24002155

| | | | | |
|----------------|---|---|---------------------|--------|
| Consisting of: | 1 | x | Rolling Diaphragm | SM-112 |
| | 1 | x | Nut | E-552 |
| | 1 | x | Check Assembly Bolt | E-553 |

Change Over Unit Diaphragm Assy for 500, 200 and 700 series 2 - 10 kg

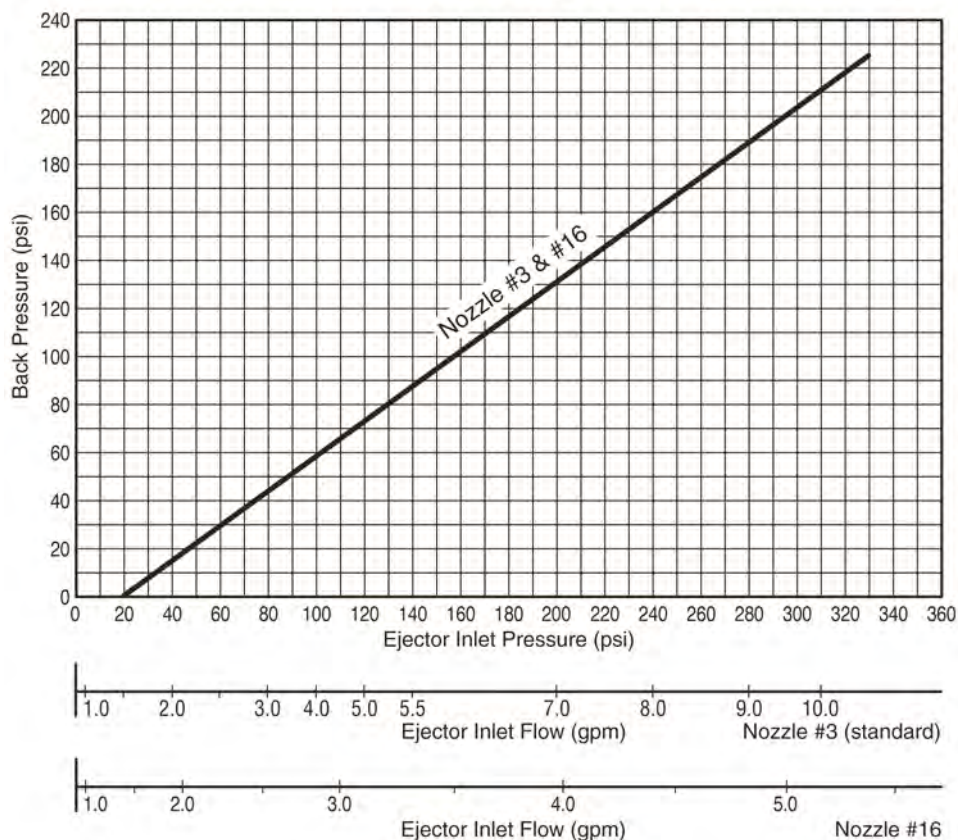
PA24002156

| | | | | |
|----------------|---|---|-------------------|--------|
| Consisting of: | 2 | x | Diaphragm bolt | SM-110 |
| | 2 | x | Diaphragm Nut | SM-111 |
| | 2 | x | Rolling Diaphragm | SM-112 |

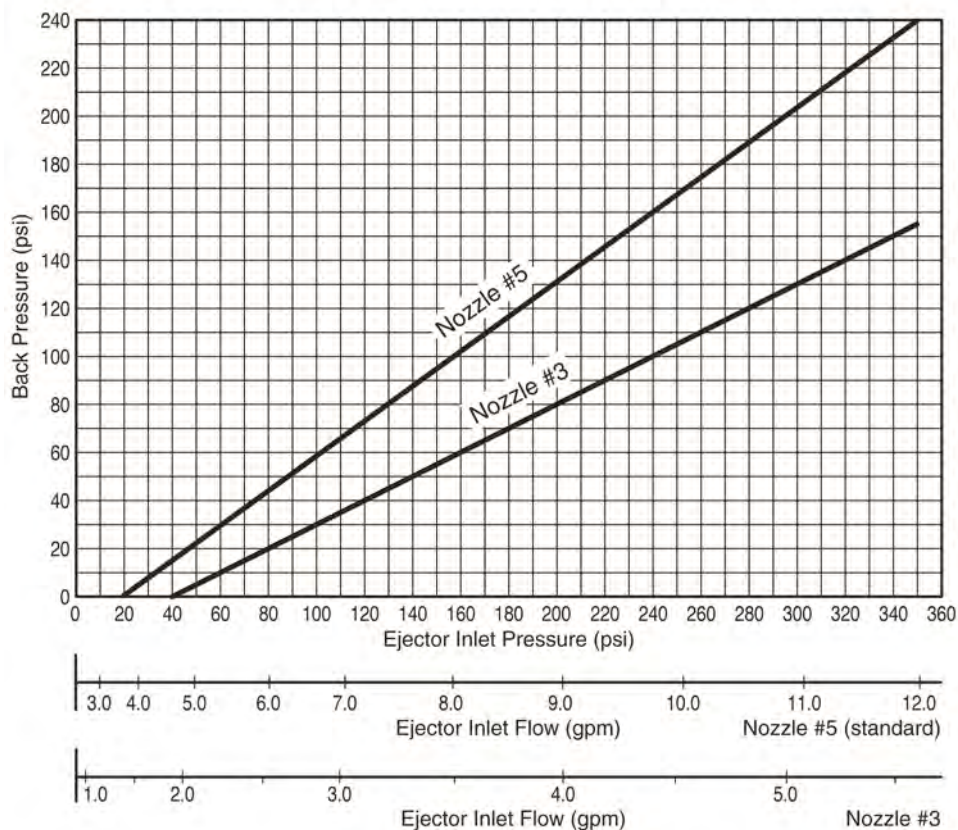


Conversion
US GPM to LPM x 3.7854

NOZZLE SIZING CHART (10 PPD / 200 gr/hr)

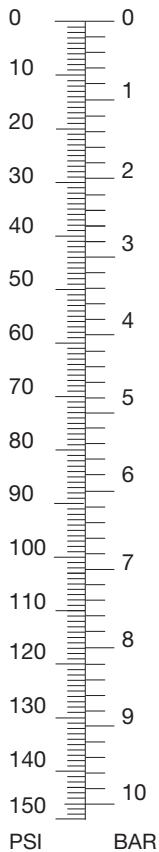


NOZZLE SIZING CHART (25 PPD / 500 gr/hr)



1. Ensure maximum case pressure of booster pump is OK.
2. All pressures shown in PSI.
3. For clean water use only.
4. Solution lines longer than 3m, step up to next size to reduce friction loss.
5. Pump suction pressure must be equal to ejector back pressure.
6. For conditions not shown, contact ProMinent office.

Hydro-Ejector
selection chart
EJ1000



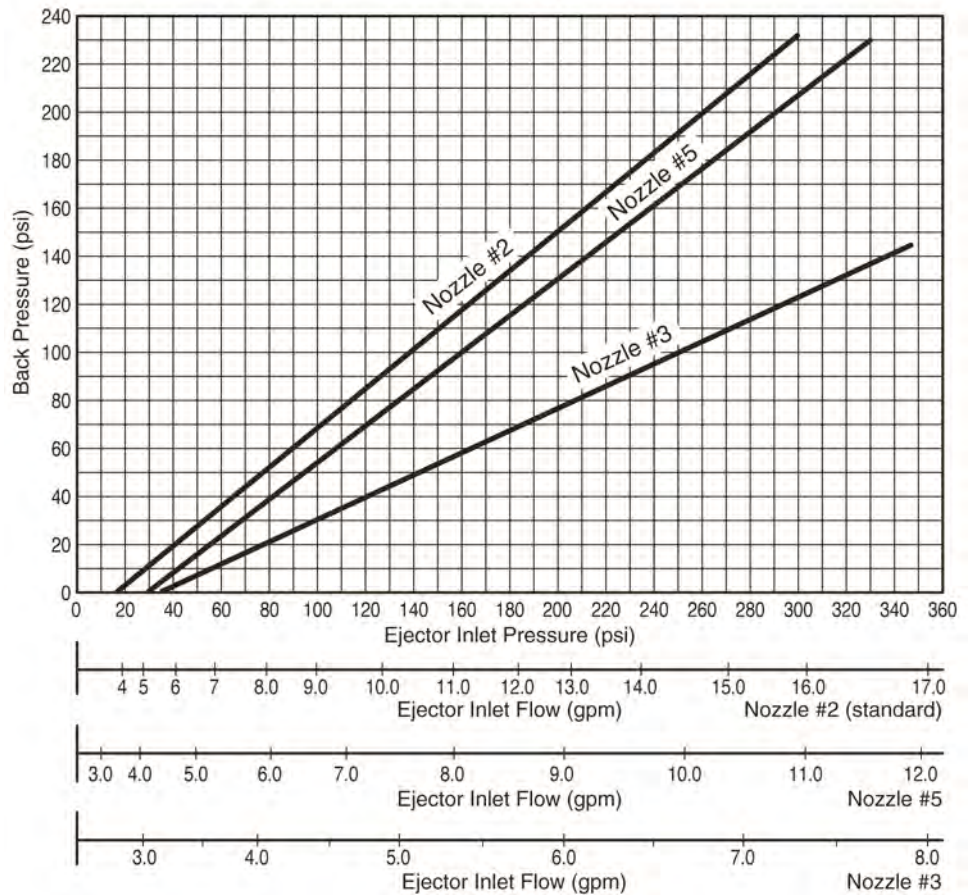
Conversion

US GPM to LPM x 3.7854

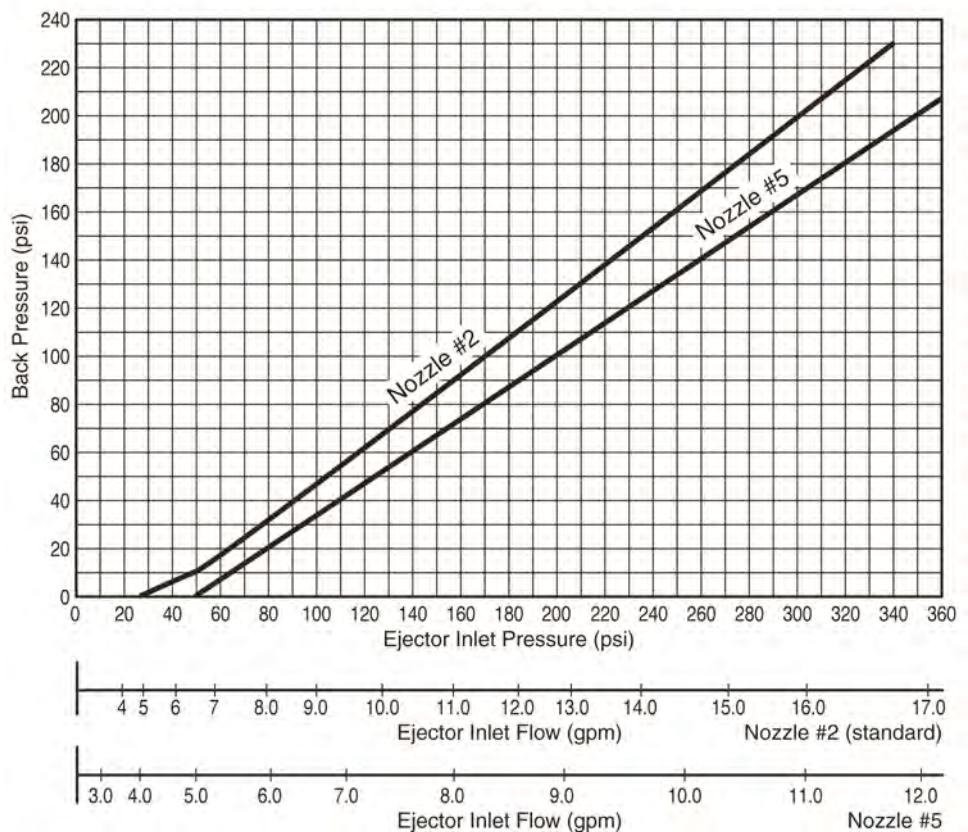
1. Ensure maximum case pressure of booster pump is OK.
2. All pressures shown in PSI.
3. For clean water use only.
4. Solution lines longer than 3m, step up to next size to reduce friction loss.
5. Pump suction pressure must be equal to ejector back pressure.
6. For conditions not shown, contact ProMinent office.

Hydro-Ejector selection chart EJ1000

NOZZLE SIZING CHART (50 PPD / 1000 gr/hr)



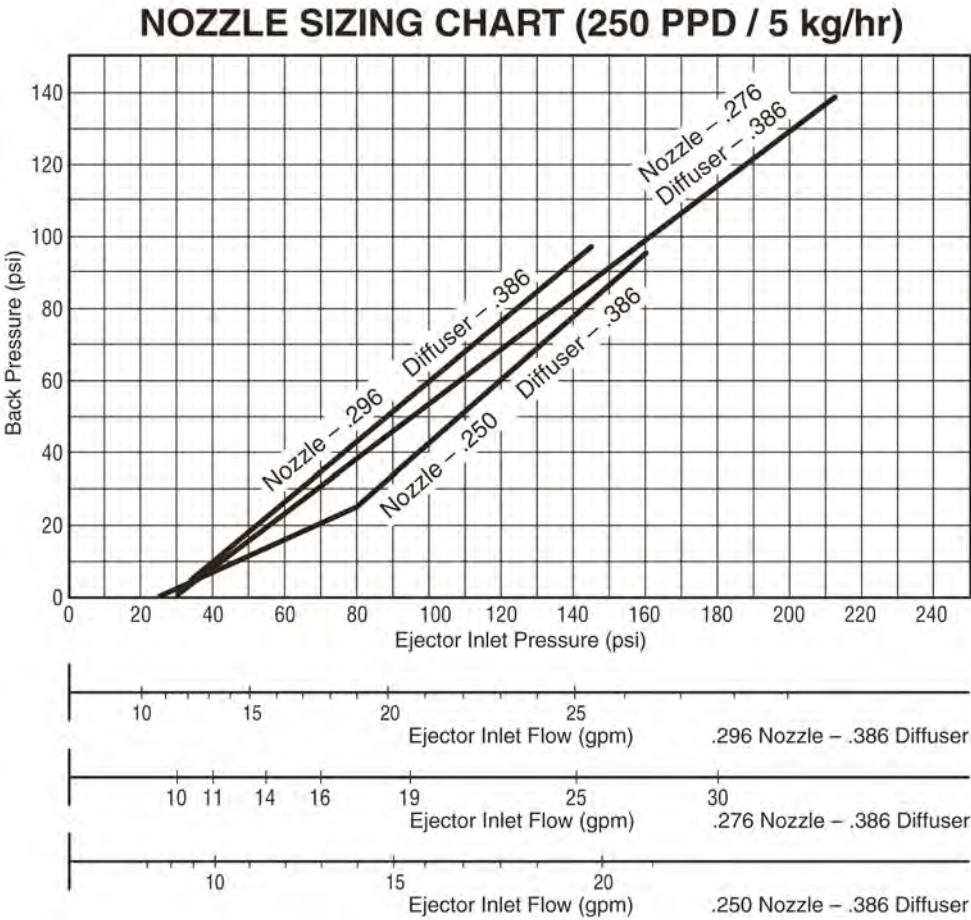
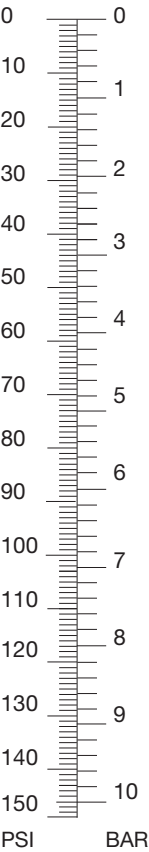
NOZZLE SIZING CHART (100 PPD / 2000 gr/hr)



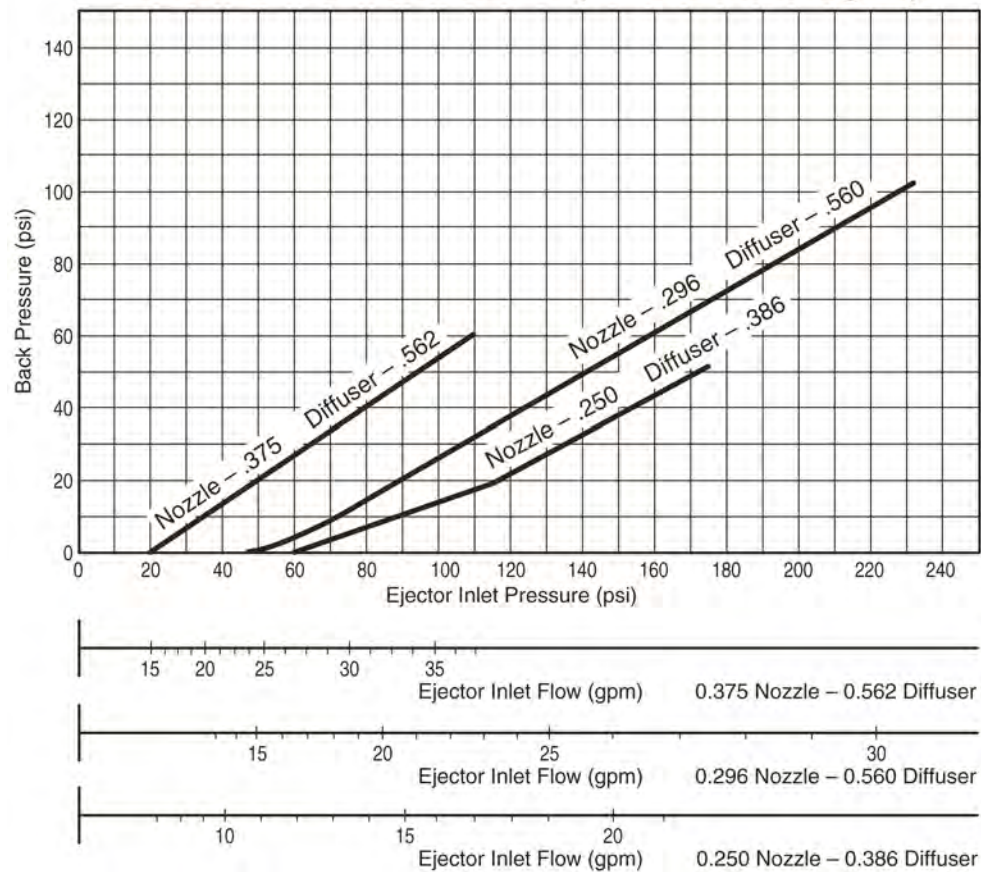
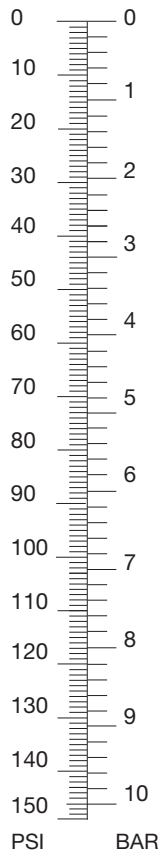
- 1. Ensure maximum case pressure of booster pump is OK.
- 2. All pressures shown in PSI.
- 3. For clean water use only.
- 4. Solution lines longer than 3m, step up to next size to reduce friction loss.
- 5. Pump suction pressure must be equal to ejector back pressure.
- 6. For conditions not shown, contact ProMinent office.

Hydro Ejector
selection chart
EJ2000

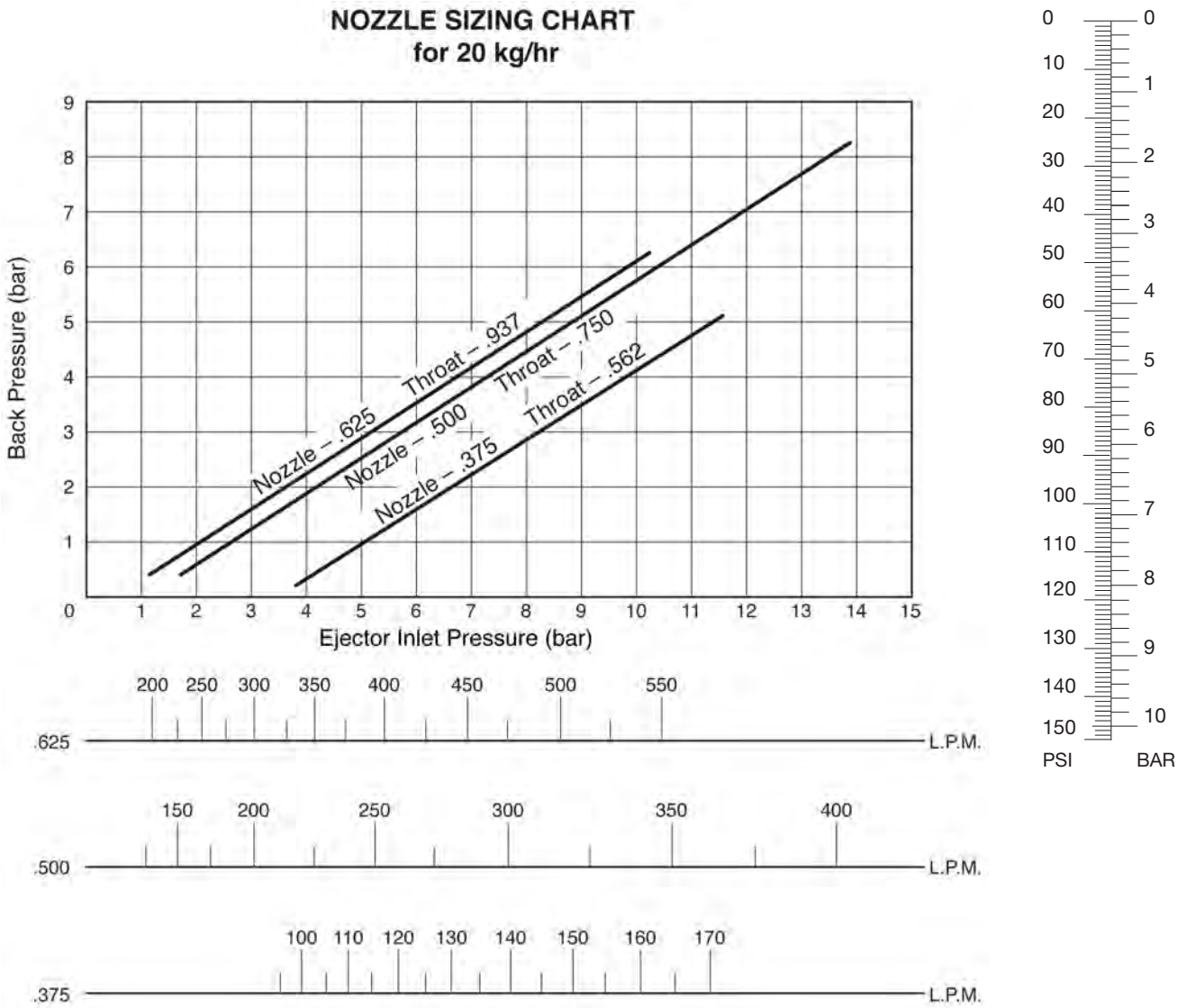
Conversion
US GPM to LPM x 3.7854



NOZZLE SIZING CHART (500 PPD / 10 kg/hr)



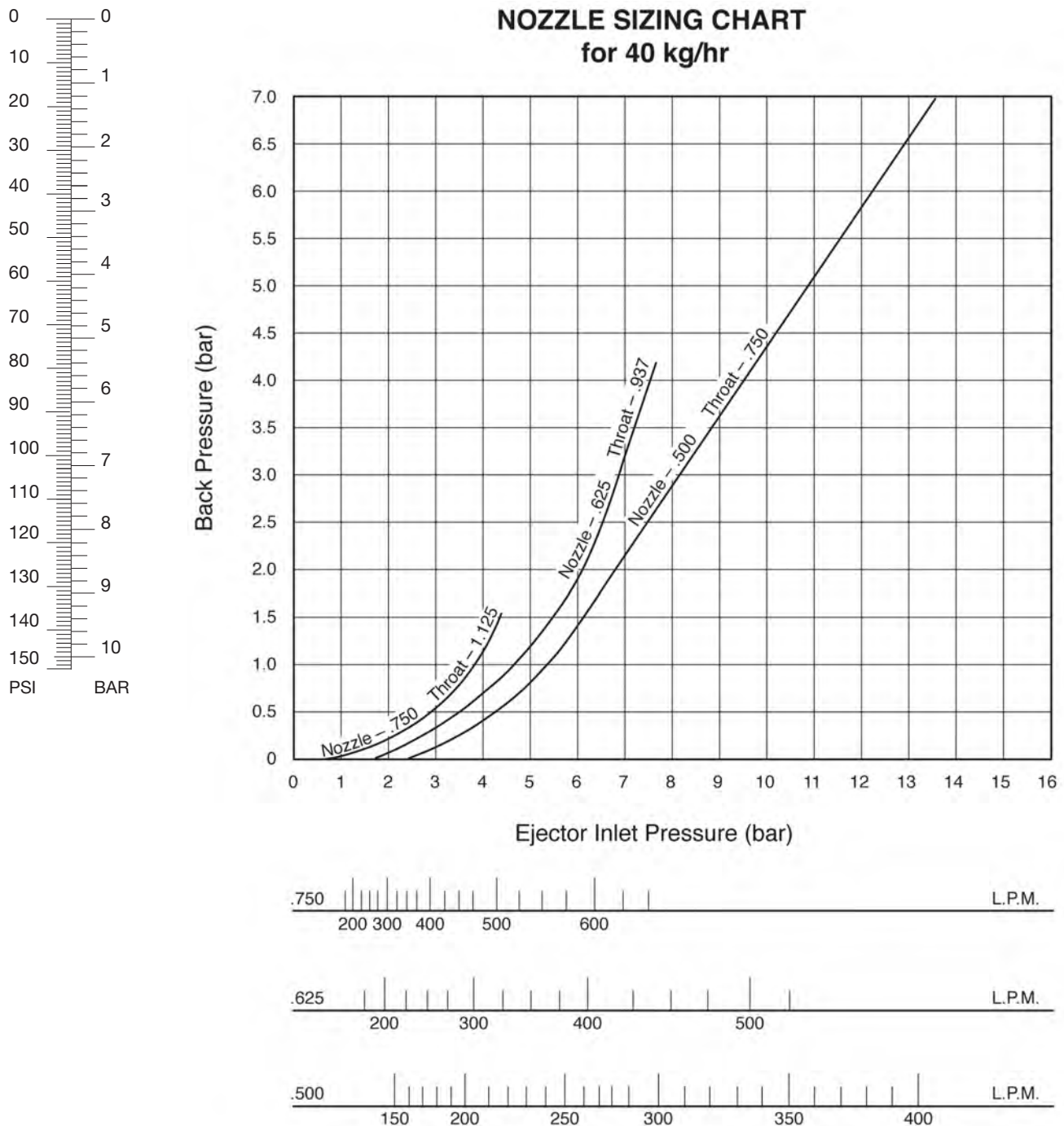
1. Ensure maximum case pressure of booster pump is OK.
2. All pressures shown in PSI.
3. For clean water use only.
4. Solution lines longer than 3m, step up to next size to reduce friction loss.
5. Pump suction pressure must be equal to ejector back pressure.
6. For conditions not shown, contact ProMinent office.



1. Ensure maximum case pressure of booster pump is OK.
2. All pressures shown in PSI.
3. For clean water use only.
4. Solution lines longer than 3m, step up to next size to reduce friction loss.
5. Pump suction pressure must be equal to ejector back pressure.
6. For conditions not shown, contact ProMinent office.

Conversion
US GPM to LPM x 3.7854

Hydro Ejector
selection chart
EJH-1000-CL2



Conversion
US GPM to LPM x 3.7854

1. Ensure maximum case pressure of booster pump is OK.
2. All pressures shown in PSI.
3. For clean water use only.
4. Solution lines longer than 3m, step up to next size to reduce friction loss.
5. Pump suction pressure must be equal to ejector back pressure.
6. For conditions not shown, contact ProMinent office.

Hydro-Ejector
selection chart
EJH-2000-CL2

QLD Office: Unit 1, 68 Murdoch Circuit
ACACIA RIDGE QLD 4110
Ph: (07) 3213 1900 Fx: (07) 3272 0445
Email: pfcqld@prominentfluid.com.au

Prominent Fluid Controls Pty Ltd
www.prominentfluid.com.au
Head Office: Unit 4, 4 Narabang Way
BELROSE NSW 2085
Ph: (02) 9450 0995 Fx: (02) 9450 0996
Email: sales@prominentfluid.com.au

VIC Office: 1/21-22 National Drive
HALLAM VIC 3803
Ph: (03) 8795 7430 Fx: (03) 8795 7431
Email: pfcvic@prominentfluid.com.au