

VOLUMETRIC FEEDER VF-2

Dry Chemical Metering



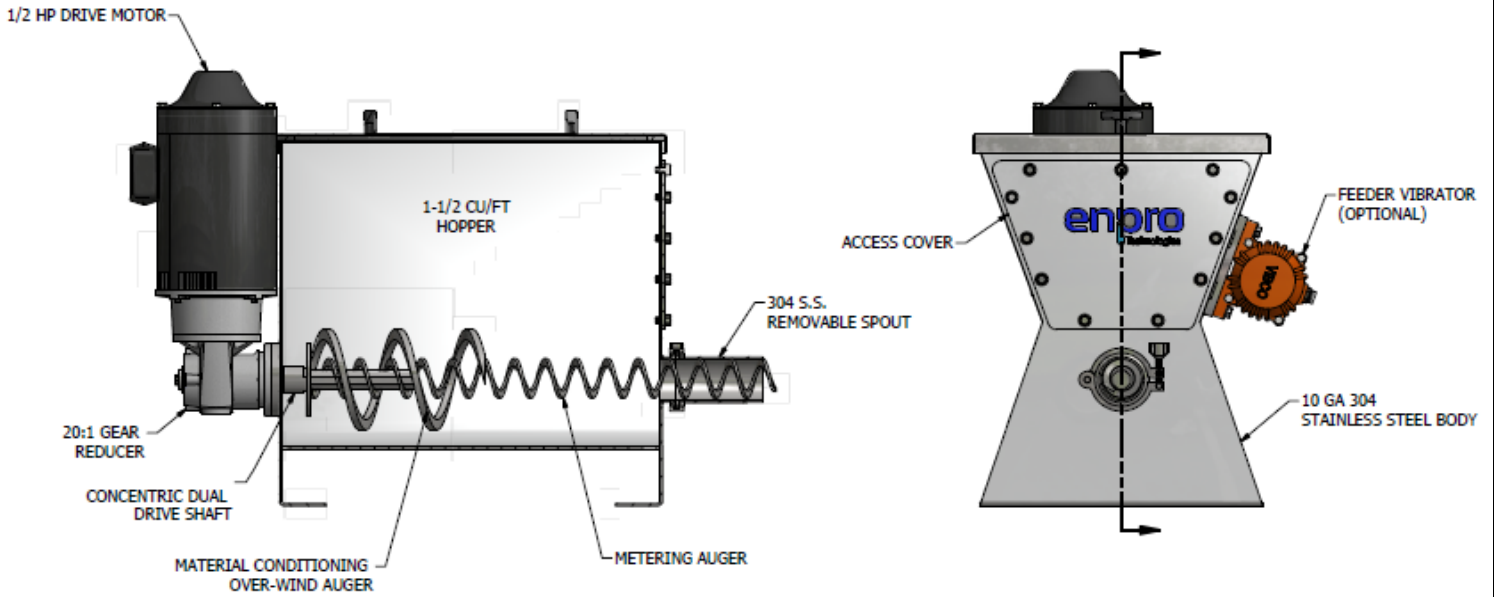
Model VF-2 shown above

Custom models and options available, consult factory.

Contact us at
4225 NE Port Dr.
Lee's Summit, MO 64064
816-795-6333 phone
816-795-6030 fax
www.ipm-sys.com

- Used to dispense powder products at a set feed rate
- Constructed of 304 Stainless Steel
- Designed with a direct drive
- Small footprint
- Placed on a tank or hung from a transition
- Engineered for reliability with the use of many products
- 1-2% accuracy within desired feed rate
- Easily change out auger and discharge
- Designed for the following chemicals:

Alum	Ferric Sulfate
Calcium Hydroxide	Polymers
Calcium Carbonate	Sodium Aluminate
Carbon	Sodium Carbonate
Copper Sulfate	Sodium Fluoride
Lime	Hydrated Lime
Diatomaceous Earth	Pebble Quick Lime
Potassium Permanganate	



Design Specifications:

- Material of Construction: 304 S.S.
- Floor Dimensions: 20-3/4 x 15-1/4 inches
- Height: 20 inches
- Hopper Opening: 15-3/16 x 12-3/8 inches
- 1-1/2 Cu. Ft. Integral Hopper
- Feed Rates: 0.02-11.5 Cu. Ft. per hour
- Auger Tooling: 3/8" to 2" Diameter
- Open Helix or Solid Shaft Auger
- Feeder Motor: 1/2 HP
- Electrical Requirements: 120/240 VAC
- Shipping Weight: 250 lbs

Accessories:

- Solution Tanks (15,35,50 Gallon Sizes)
- Liquid Level Control (on tanks)
- Mixer (on tanks)
- Bag Unloader (304 S.S.)
- Bulk Bag Frame
- Feeder Stand (304 S.S.)
- Drum Inverter
- Dust Collector
- Explosion Proof Motors (Class 1, Division 1, Groups F and G)
- Knife Gate

Table 1.0		
Auger Size	C ft / Hr (Max) 100% motor speed	C ft / Hr (Min) 10% motor speed
3/8	0.07	0.007
1/2	0.14	0.014
5/8	0.3	0.03
3/4	0.77	0.077
7/8	1.32	0.132
1	1.79	0.179
1 1/8	2.8	0.28
1 1/4	3.5	0.35
1 3/8	4.2	0.42
1 1/2	6.9	0.69
1 5/8	8.25	0.825
1 3/4	9.28	0.928
2	12.38	1.238

Instrument Features:

Motor:

- Horse Power: 0.5
- RPM: 1750
- FL Amps: 0.8-1.5
- Phase: 3
- Frequency: 60
- Frame: 56C
- Duty: Inverter, Continuous
- Enclosure: TENV



Table 2.0	
Voltage Options	
115/208-230 AC	
208-230/460 AC	
90 DC	
180 DC	

Gear Reducer:

- Integral motor : 1/6 to 2 HP
- C-face adapter frame size range: 48C to 140TC
- IEC adapter [B5] frame size range: IEC 63 to IEC 90
- Ratio: 20:1
- Up to AGMA Class 13 gear quality rating
- Bronze alloy Worm wheel material
- Hardened steel worm material
- 58 Rockwell C minimum gear hardness
- Aluminum alloy housing material
- UNICASE™ one piece main housing design
- Seals directly contact main housing



Table 3.0		
Gear Reducer Options		
Ratio	Type	Frame
10:1	Inline	56C
15:1	Right Angle	140TC
20:1	Minicase	180TC
30:1		
40:1		

Vibrator: (Optional)

Technical Specifications:

- 3200 VPM at Single Phase
- 20 lbs. of force
- 115 Volts (230 Available)
- 45 dB on A-Scale at 1 meter

Benefits:

- Increased material flow
- Increased production rate
- No more lost man hours on cleaning bin



Loading Options:

Hopper:

- 304 Stainless Steel Construction
- 10 gauge
- Lid Available

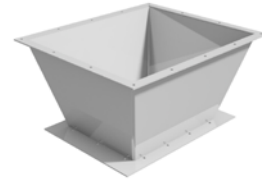


Table 4.0
Hopper Options
2.5 Cubic Foot Transition (For Bag Unloader)
3.5 Cubic Foot
4 Cubic Foot (For Dust Collector)
Contact Factory for Custom Size Hoppers

Single Bag Unloader:

- 304 Stainless Steel Construction
- 10 gauge
- Door with Gasket



Dust Collector:

- Manual Shaker Type
- ½ HP Motor 3450 RPM
- 284 CFM
- Blue Texturized Finish

